

Dotterel Team

2 seasons of learnings



New Zealand Dotterel / Tūturiwhatu

- ~2,130 individuals remaining (at risk/recovering)
- Breed Aug–Feb, 3 eggs
- Breeds on Motuihe



Survey method

- Walk along beaches once every 2 weeks to count dotterels, nests, eggs and chicks
- Identify nesting pairs from defensive behaviour



Breeding season 1



Dates

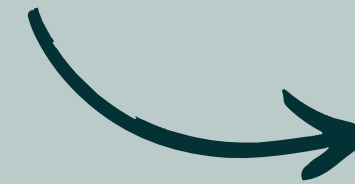
Nov 2023 – Feb 2024

Surveys

5

Nests

3



Fledged

0

*How can we support
the dotterels to
improve breeding
success?*

Learnings from season 1

- Understand threats to eggs and chicks
- Increase protection from avian predation
- More consistent surveys



*Let's support the
dotterels to improve
breeding success!*



Initiatives in season 2

- Understand threats to eggs and chicks

Trail camera to observe nests

- Increase protection from avian predation

Nest shelters

- More consistent surveys

BirdsNZ funding

Nest shelter



Thank you Sian!!

- Chicken wire mesh cover
- Deter intrusion by bigger birds
- Does not impede dotterel movements

Breeding season 2!



Dates

Sep 2024 – Feb 2025

Surveys

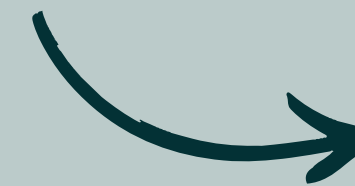
13

Nests

11 (↑ 8)

Fledged

6 (↑ 6)



- increase in number of nests is partly because we started surveys two months earlier so had more data.

Increased hatching success



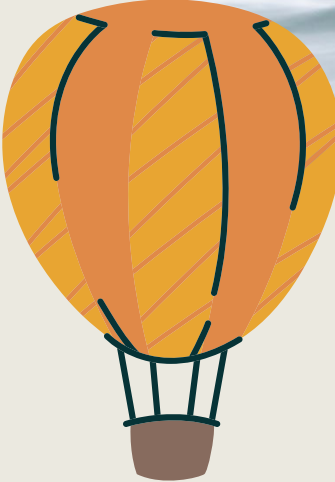
hatching success increased
>2.5X which suggests the nest
shelter was effective

Fledglings/breeding pair of ~0.8 demonstrates effective
management according to DOC's species recovery plan

Chicks! ♥



Fledglings of 2025



Motuihe Trust

Birds New Zealand, Projects Assistance Fund

Jill Soufflot, Operations Manager

Dotterel Team

Sian Luckie | Katie Vanderstok | Mary Langdon | Joe Cooper | Emma Chan |
Kamolphat Atsawawaranunt | Kamyra Patel | Marijke Struijk | Sam Shea

John Dowding, John Stewart, Kay, Adrian Reigen, Pūkorokoro : Frouk Miller, Tansy Bliss

Rare Plants Team

Fellow Motuihe volunteers

